

DAT Update

Edward T. Tsai

19th NAAHP National Meeting
June 16-20, 2010

Atlanta, GA

Agenda

- Introduction
- Trends
- Validity
- Update

Introduction

- **Dental Admission Test (DAT)**

- The DAT is a battery including the following tests:

biology,
general and organic chemistry,
perceptual ability,
reading comprehension, and
quantitative reasoning.

- The DAT measures general academic ability, comprehension of scientific information, and perceptual ability.

Introduction

- **Administration**

- The DAT is administered on computer at approximately 348 Prometric test centers in the United States, its territories including Guam, Puerto Rico, and the Virgin Islands.
- The DAT is administered throughout the year (12 months of continuous testing), the high volume of administrations of the DAT occurred in May through October.
- Effective in December 2009, applicants are required to obtain and use DENTPIN[®] (unique personal identifier for applicants and students involved with the U.S. dental education system and standardized testing programs) to apply for taking the DAT. In ADA, DENTPINS are used to identify all examinees.

Introduction

The following steps are prepared by the Dental Admission Test Program to help DAT applicants to understand information regarding application, testing procedures, and policies. These steps are posted on the American Dental Association Website at: <http://www.ada.org/dat.aspx>.

- Read the *DAT Guide*.
- Obtain a DENTPIN[®] and apply to take the test.
- Schedule a time to take the test.
- Take the test at a Prometric test center.
- Request score reports.

Introduction

The DAT scores are reported to examinees and pre dental advisors and transmitted to dental schools, AADSAS and TMDSAS in different ways.

- Examinees receive an unofficial score report on completing the test at Prometric test centers.
- Dental schools can download scores from ADA secure score site.
- DAT scores are transmitted to AADSAS and TMDSAS.
- Reports of scores are mailed to pre dental advisors quarterly.

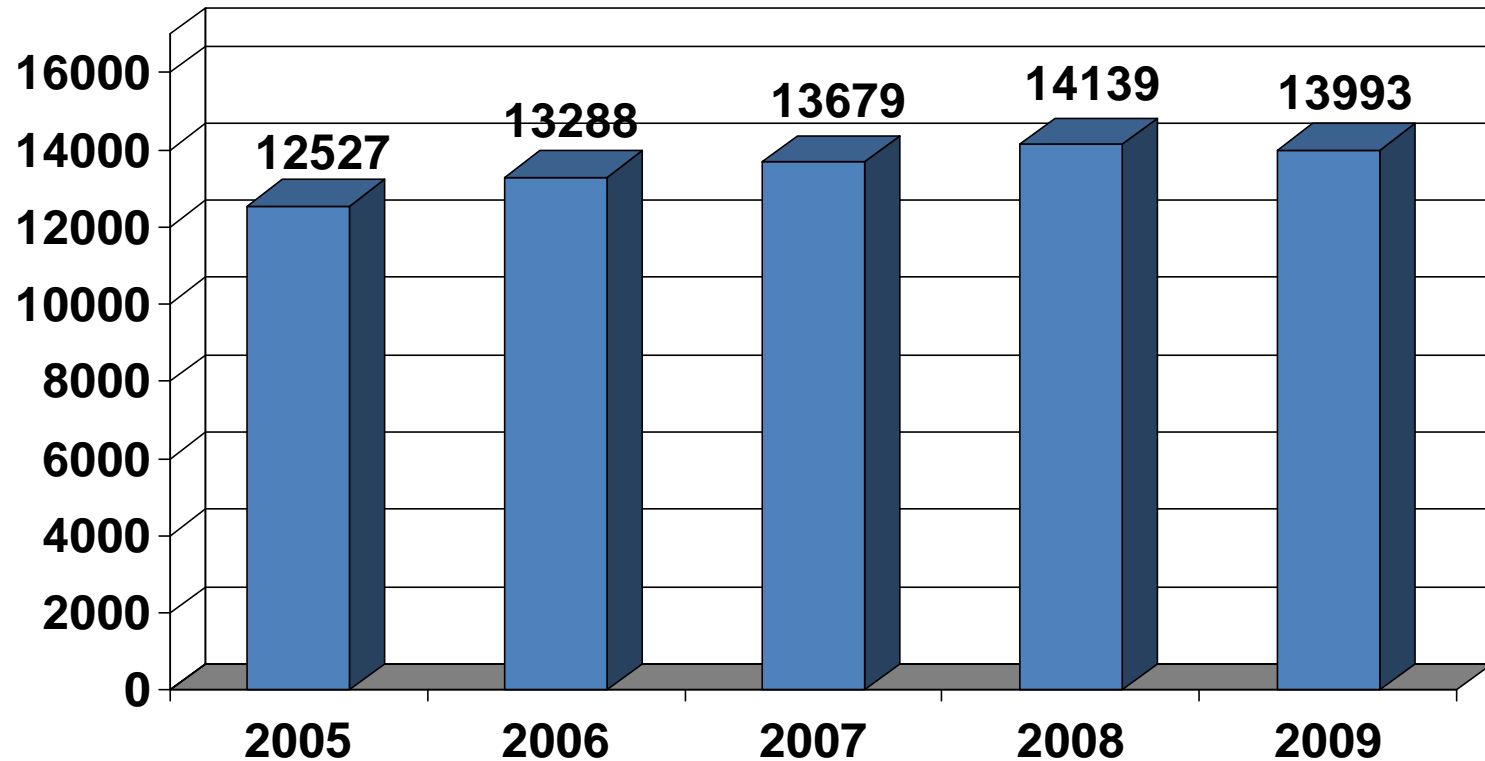
(The report includes names, test dates, and scores of examinees who indicated their desire to have their results communicated to their pre dental advisor.)

Introduction

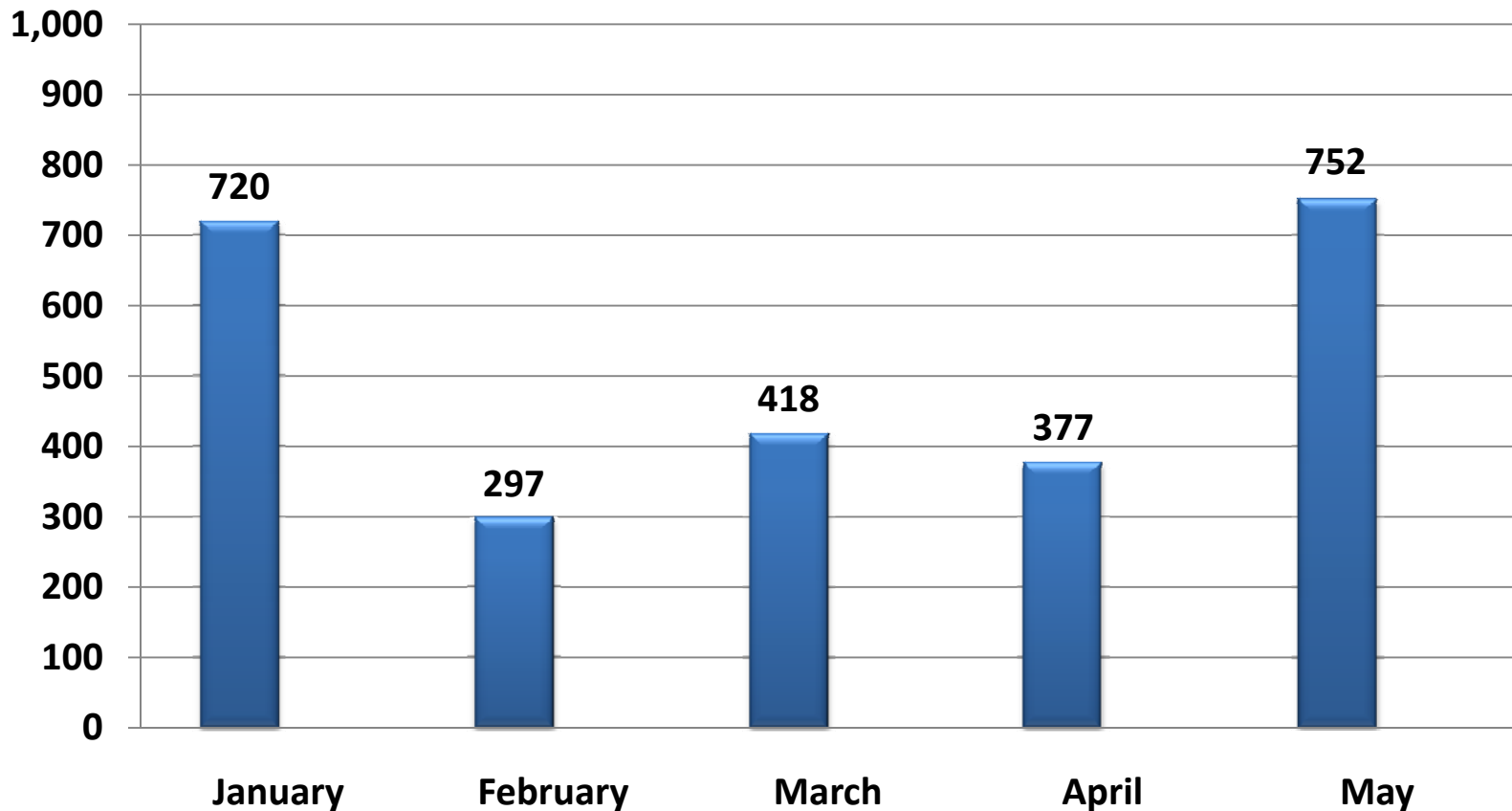
The ADA has been working with American Dental Education Association to transmit the DAT scores through AADSAS. Effective **July 1, 2010**, the DAT fee is \$285 and the procedure for requesting score reports will change. The new procedure is posted on the ADA website at: <http://www.ada.org/dat.aspx>.

- If the schools an applicant requested on his DAT application participate in AADSAS or TMDAS, his scores will be available to all schools directly and through the application service.
- Schools selected at the time of application are included in the DAT application fee regardless of the number of schools selected.
- DAT applicant can also request that a score report be sent to his pre dental advisor at no charge at the time of application.
- To send an official score report to DAT applicant himself or alternate institution after applicant has submitted his DAT application, an addition fee is applied per report.

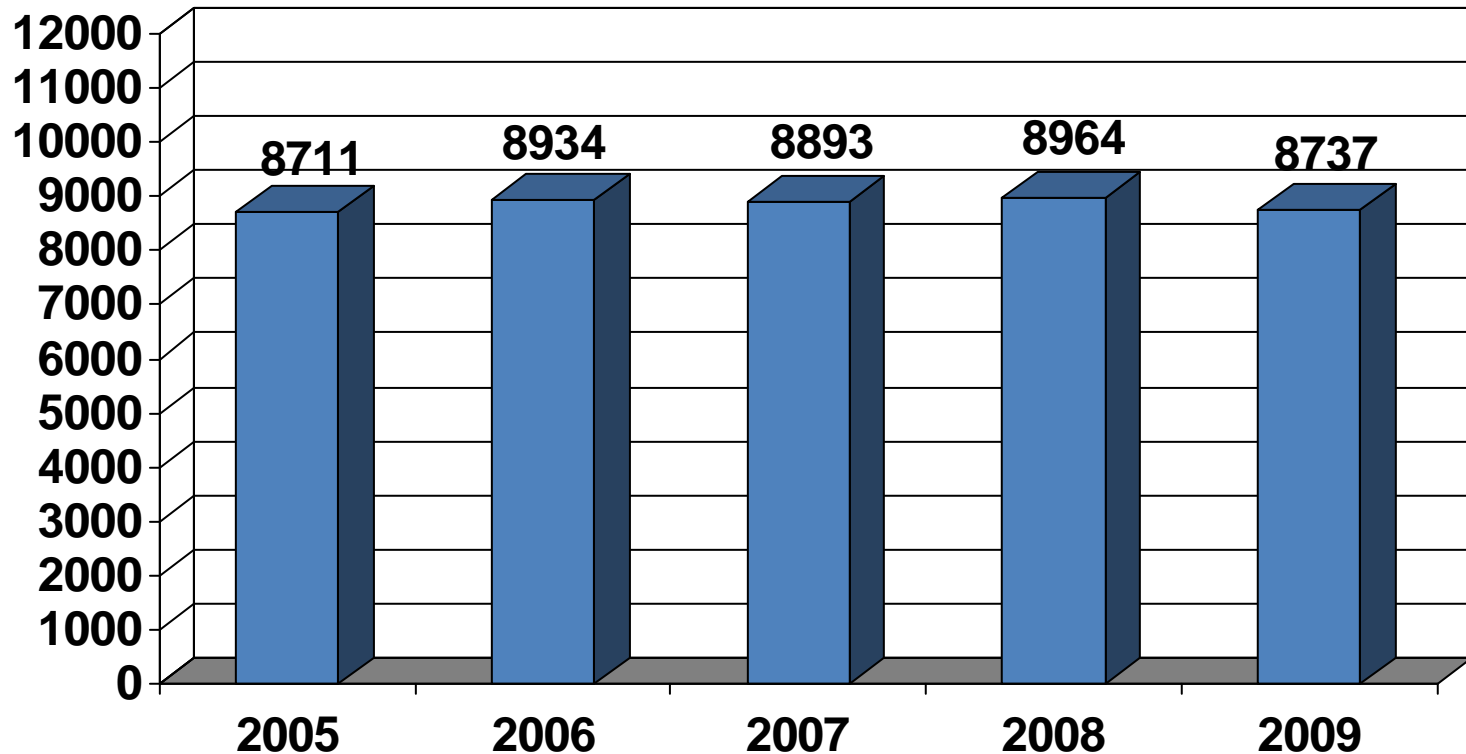
Trends: Number of Administrations, 2005-2009



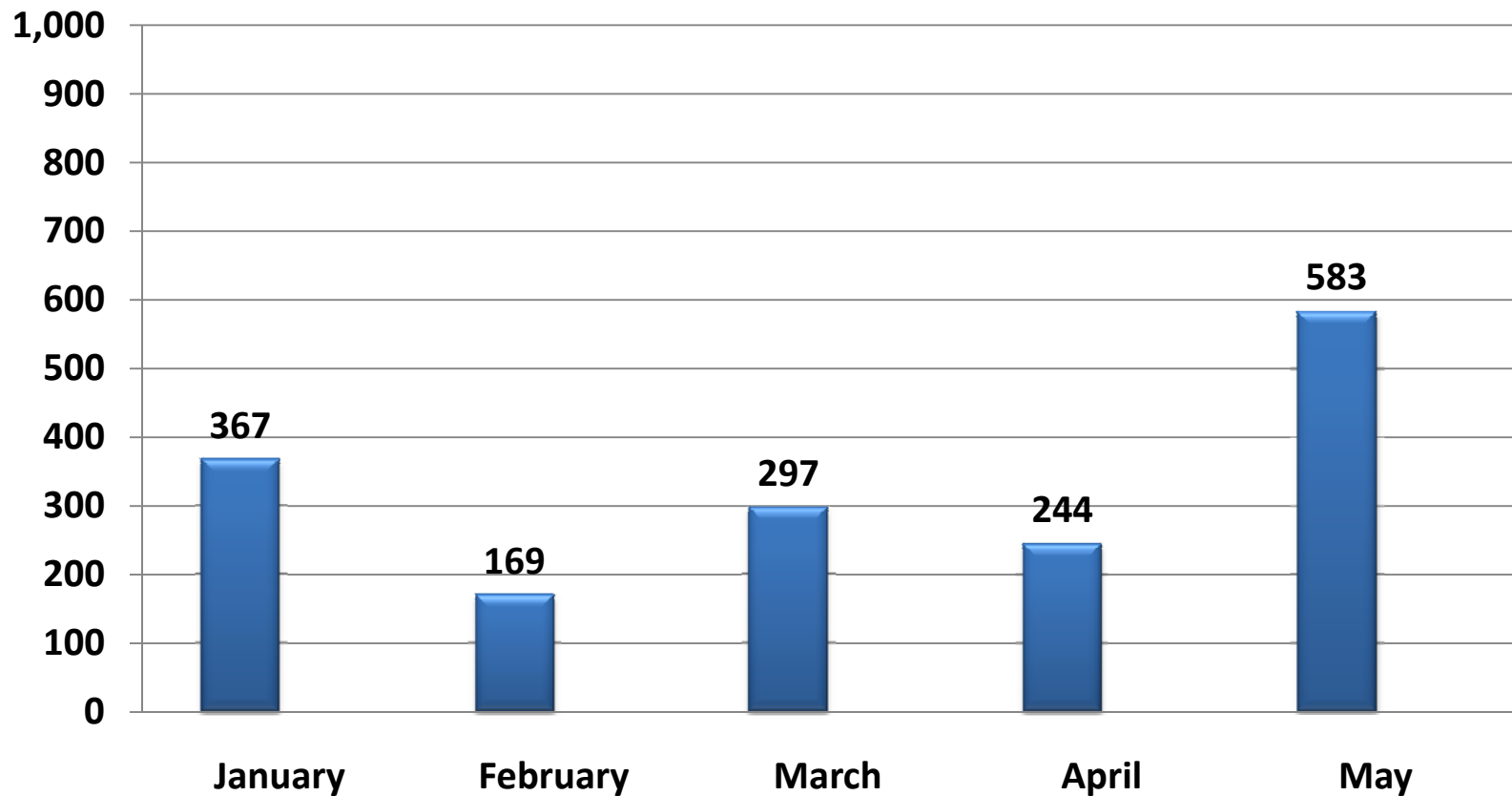
Number of Administrations, January – May, 2010



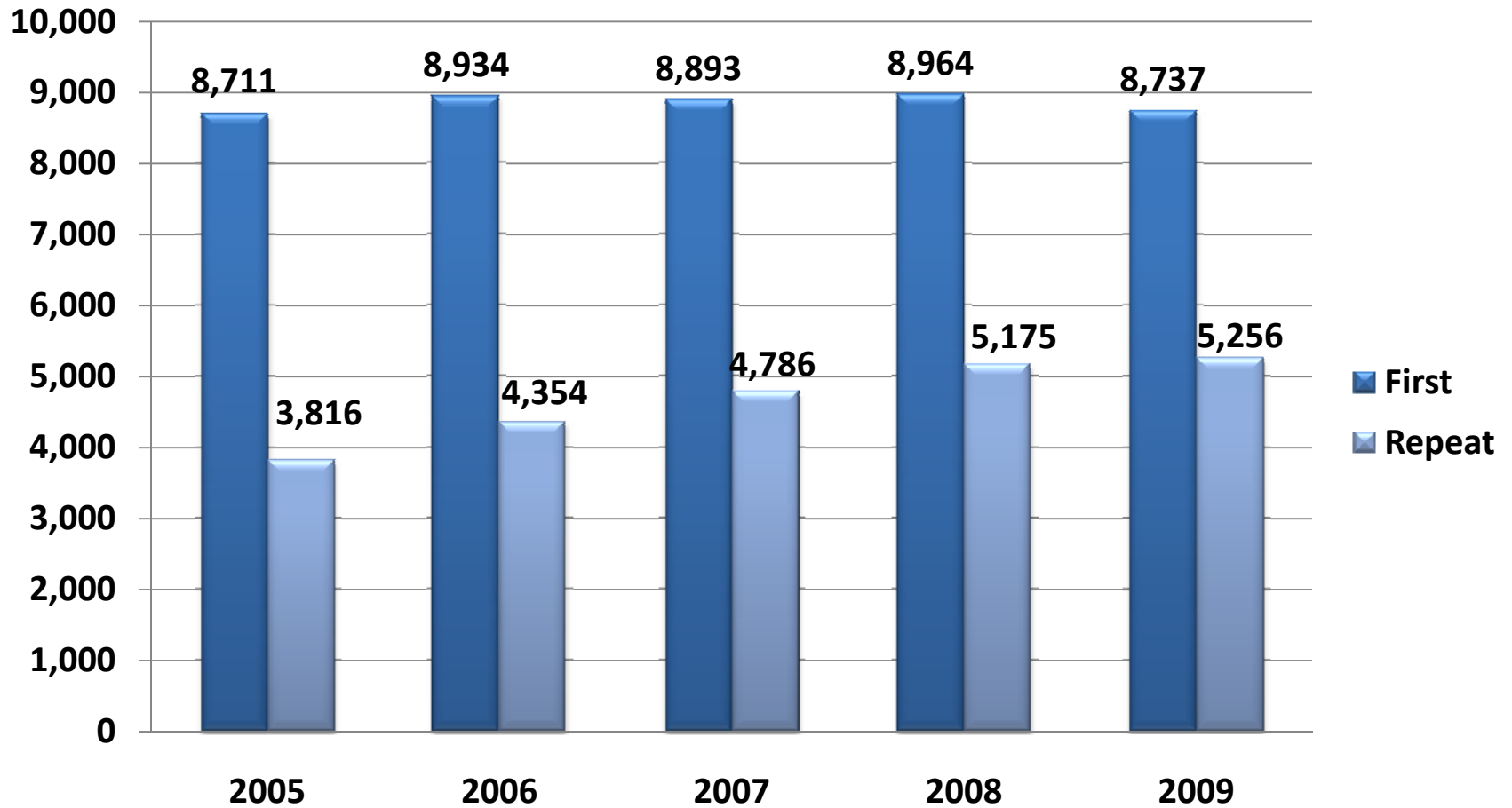
Trends: Number of Examinees, 2005-2009



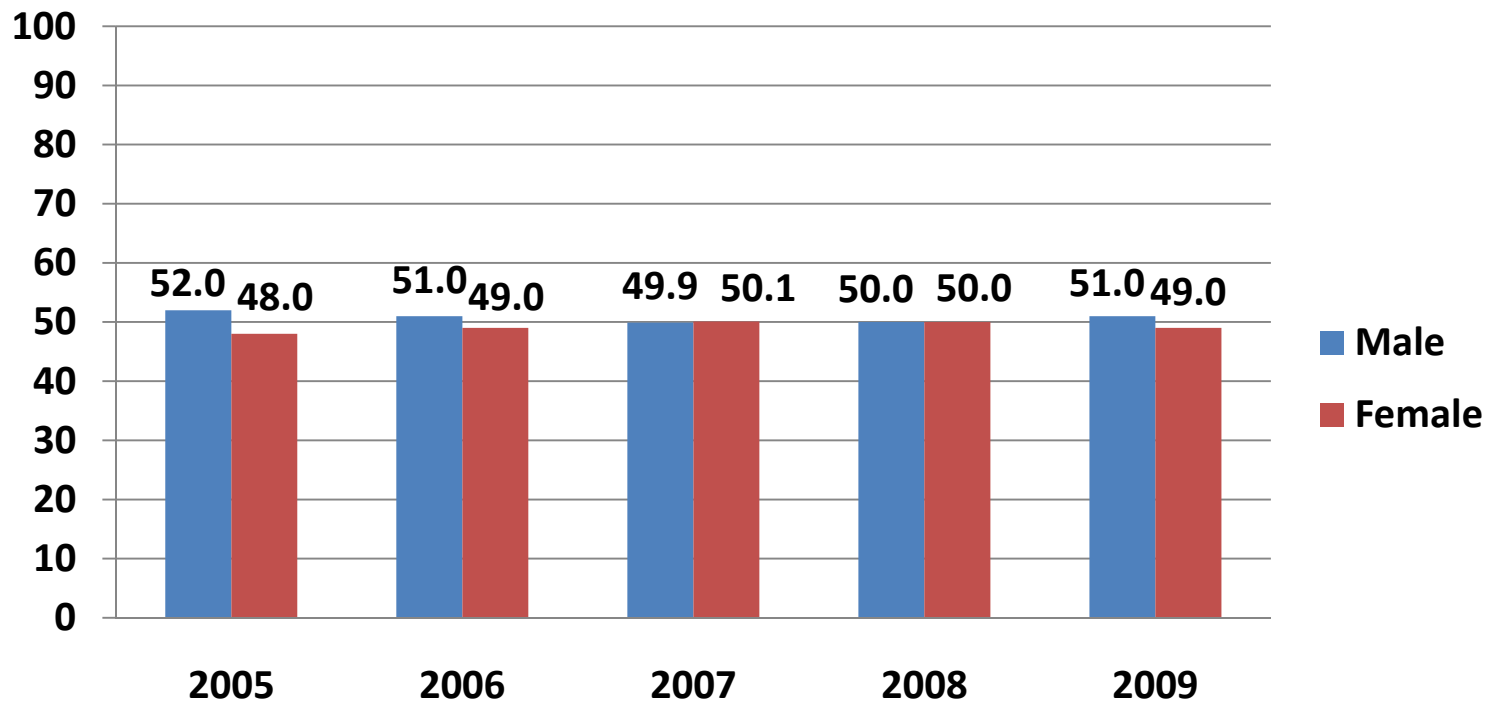
Number of First Time Examinees, January – May 2010



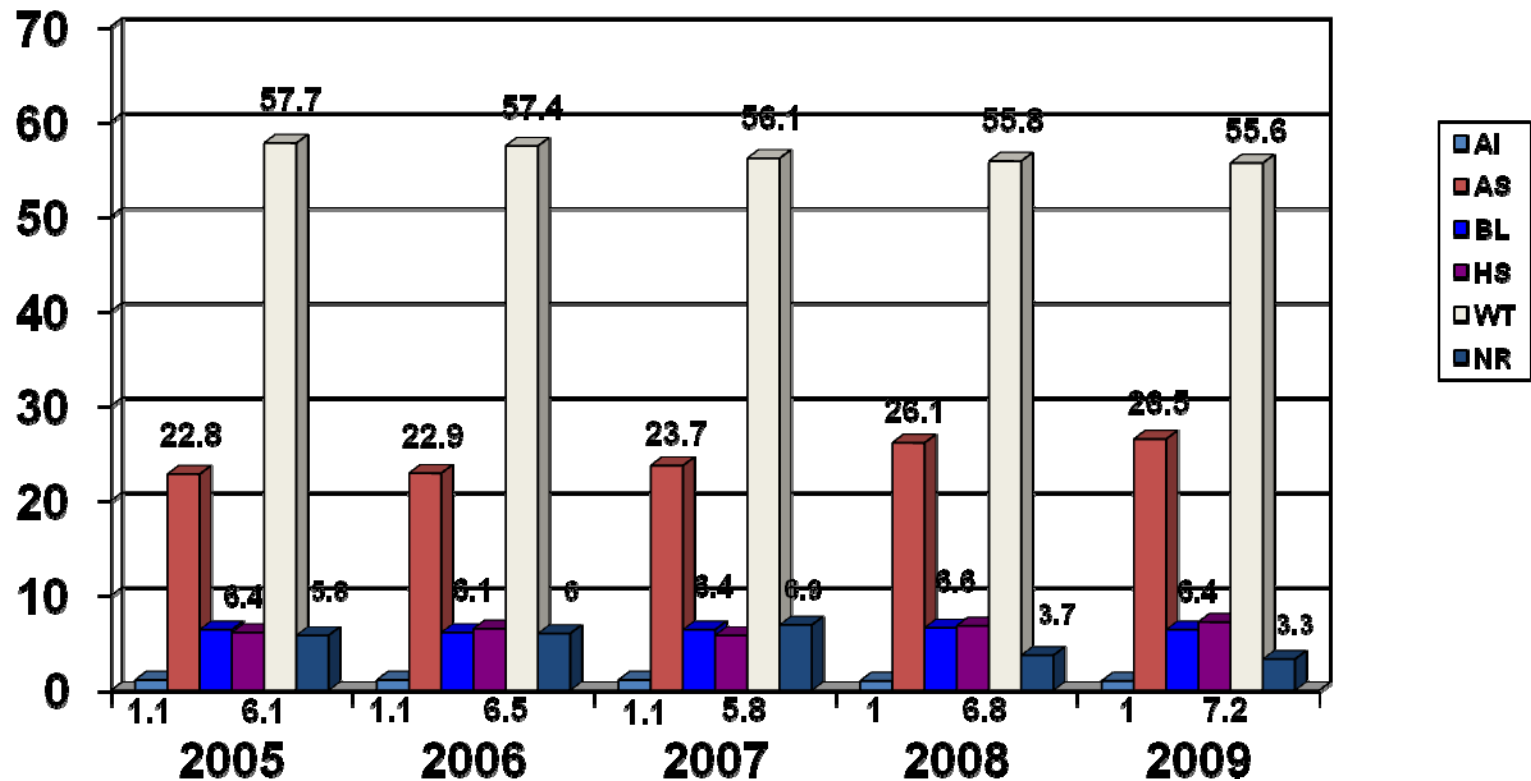
Trends: Number of Examinees by Status, 2005-2009



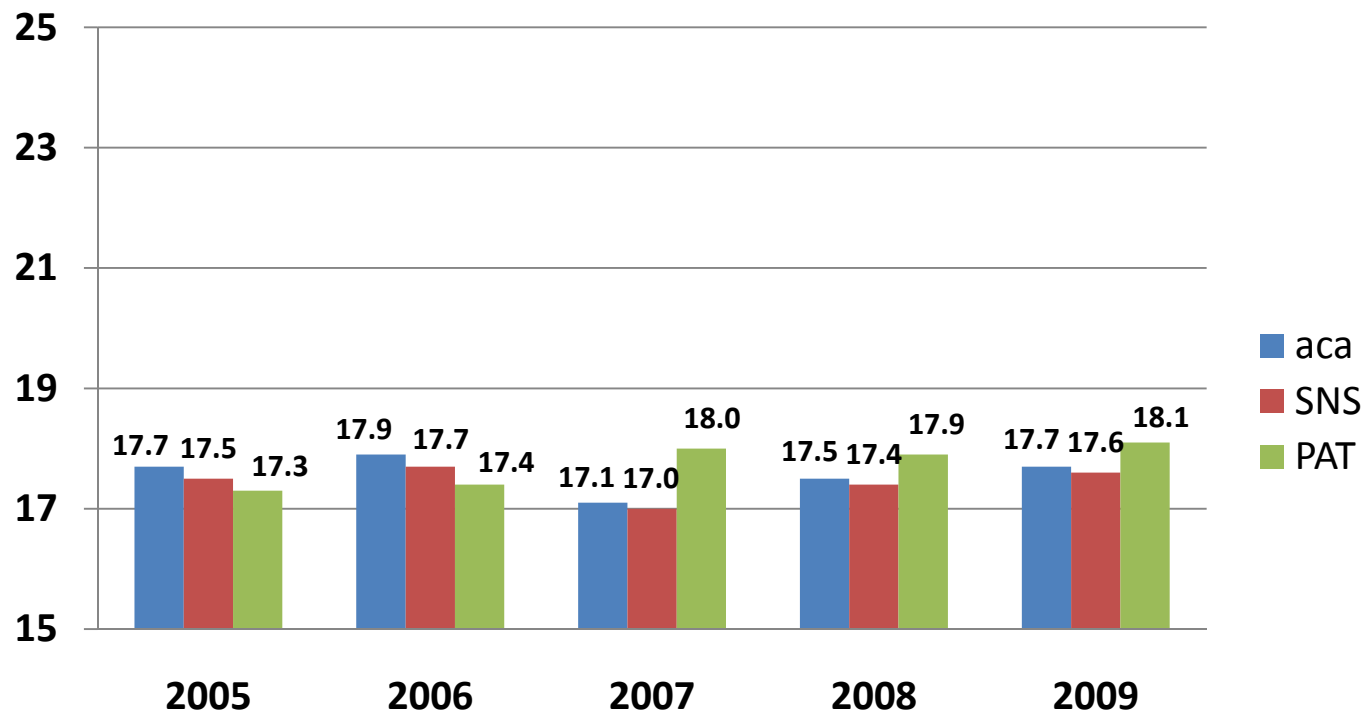
Trends: Percentage of Administrations by Gender, 2005-2009



Trends: Percentage of Administrations by Race, 2005-2009



Trends: First-time Examinee Performance, 2005-2009



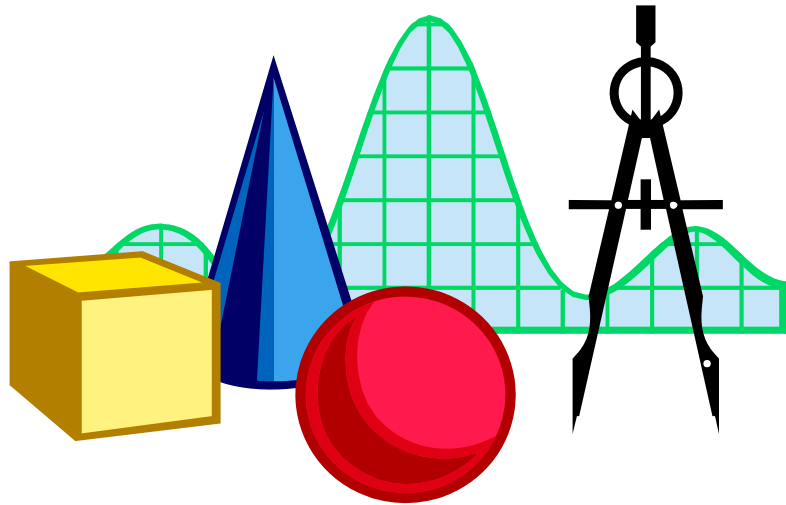
Validity

- The ADA conducts DAT validity study annually. Outcomes of the validity studies have showed that
 - DAT science scores (scores from biology, general chemistry, and organic chemistry), two DAT composite scores (total science and academic average), and reading comprehension score are significant predictors (at the 0.05 level of significance) of dental school performance except for pre-clinical dental technique grades, and
 - the predictive power of the perceptual ability score, however, is significant relative to first-year and second-year pre-clinical dental technique grades.
- The information gained from annual validity studies adds another piece of information for dental school admission committees to consider as part of the admission process.
- Details of the recent study was published in 2010, *Report 1 of the Dental Admission Testing Program, Validity Study, 2007-2008*. The report is posted on the ADA Website at: http://www.ada.org/sections/educationAndCareers/pdfs/dat_validity_study.pdf.

Update

- A basic calculator appears on the Quantitative Reasoning Test beginning in 2010.
- The Council on Dental Education and Licensure is working with the American Dental Education Association regarding the use of the ETS PPI rating scale instrument as a possible tool to assess non-cognitive abilities.
- The ADA is exploring the MCAT policy regarding recording violation(s) of examination regulations on examinees' score reports and the potential ramifications of adopting such a practice for the DAT.
- During the November 2010 meeting, the Council will make a decision regarding whether to include a critical thinking test on the DAT.

Questions?



Edward T. Tsai, Ph.D.
Manager, R&D/Psychometrics
American Dental Association
211 East Chicago Avenue, Suite 600
Chicago, IL 60611-2678

tsait@ada.org
312-440-2684, voice
312-587-4105, fax